

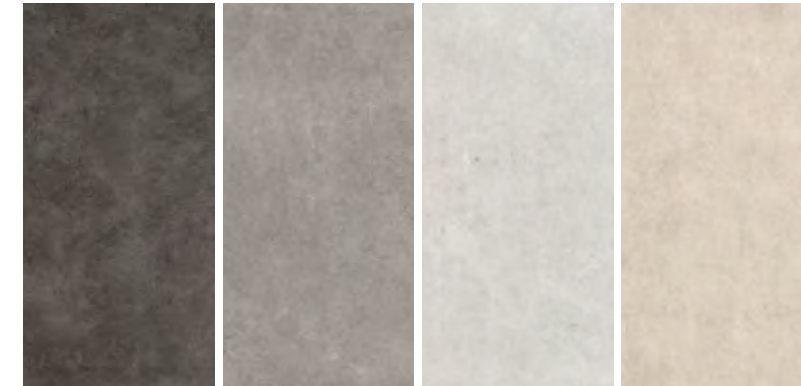
# S Q U A R E

play with surfaces



# S Q U A R E

p l a y   w i t h   s u r f a c e s



Le strade e gli edifici delle metropoli hanno ispirato l'estetica di Square, forte e decisa, elegante e minimalista come solo l'architettura contemporanea sa essere. Le geometrie regolari, da comporre attraverso le quattro varianti cromatiche e le tre superfici, rappresentano la cifra stilistica del progetto.

*The streets and buildings of the metropolis were the inspiration behind the aesthetics of Square, strong and decisive, elegant and minimalist as only contemporary architecture can be. Four chromatic variations and three surfaces can be combined to create regular geometric arrangements, which represent the project's stylistic code.*

*Les rues et les édifices des métropoles ont inspiré l'esthétique de Square : forte et décidée, élégante et minimaliste, comme seule l'architecture contemporaine sait l'être. Les géométries régulières, à composer avec les quatre variantes chromatiques et les trois surfaces disponibles, symbolisent la touche stylistique du projet.*

*Die Optik von Square ist von den Straßen und Gebäuden großer Städte inspiriert. Sie ist ausdrucksstark und markant, elegant und minimalistisch, ganz im Stil der zeitgenössischen Architektur. Die gleichmäßige Geometrie, die durch die Kombination der vier Farbvarianten und drei Oberflächen entsteht, stellt das Stilelement des Projektes dar.*

*Эстетика больших городов с их современной архитектурой получила свое отражение в коллекции Square – мощной и смелой, элегантной и минималистичной. Идеальная геометрия форм, четыре расцветки и три фактуры – таковы слагаемые стиля этого урбанистического проекта.*

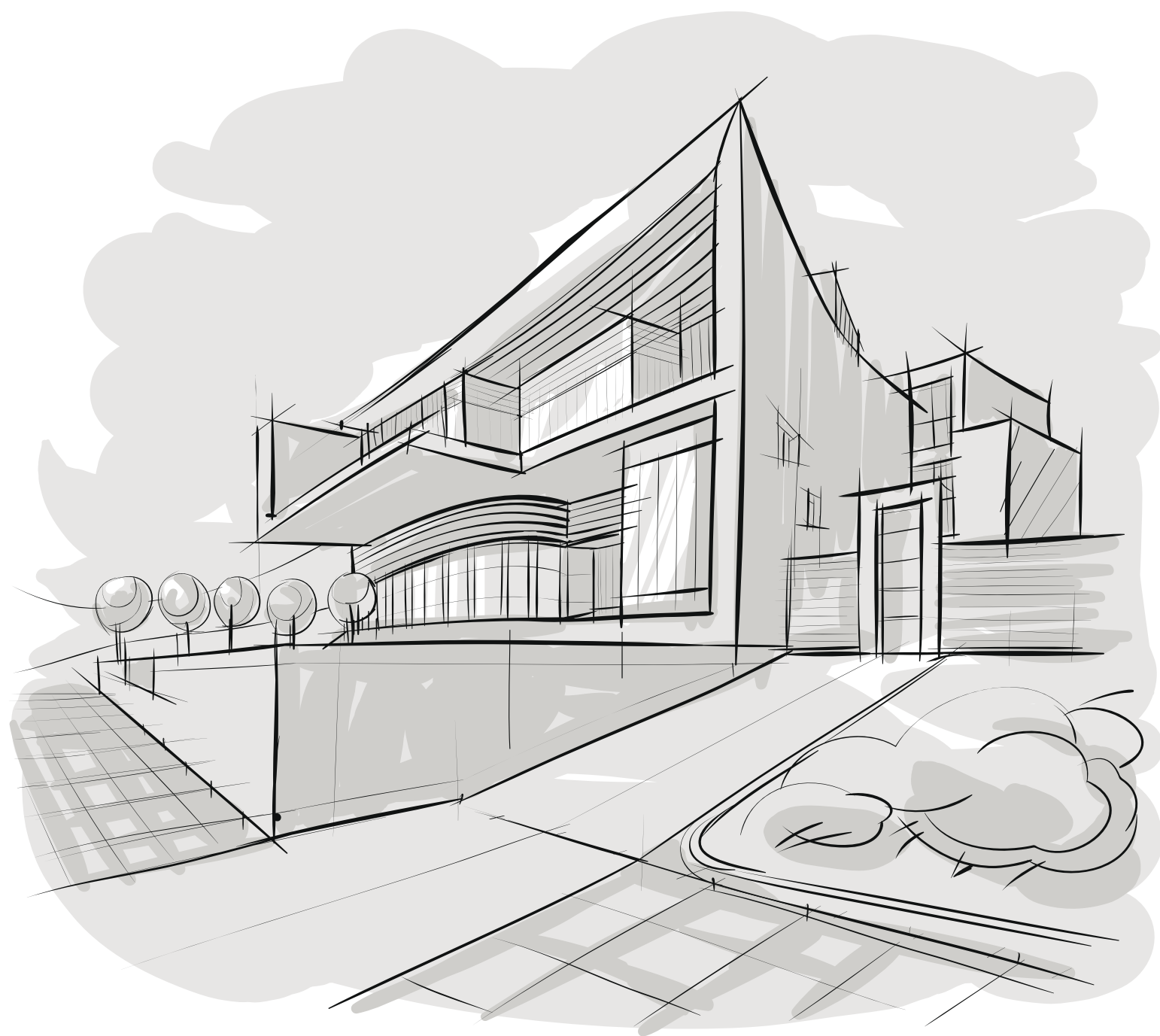
AMBIENTI DOMESTICI PERVASI  
DALL'ENERGIA VITALE DELLA  
METROPOLI IN CONTINUA  
EVOLUZIONE. GEOMETRIE  
PERFETTE DEFINISCONO SPAZI  
ACCOGLIENTI, VERSATILI, DAL  
DESIGN UNICO E PERSONALE.

*Home environments  
infused with the  
vital energy of an  
ever-changing  
metropolis.  
Perfect geometric  
arrangements  
make for cosy,  
versatile spaces  
with a unique and  
personal design*

*Des espaces do-  
mestiques remplis  
de l'énergie vitale  
de la métropole en  
perpétuelle évolut-  
ion. Les géométries  
parfaites défin-  
issent des espa-  
ces accueillants,  
versatiles, au design  
unique et personnel.*

*Von der vitalen Energie  
sich ständig wan-  
delnder Metropolen  
durchdrungene Wohn-  
bereiche. Perfekte  
Geometrien schaffen  
behagliche, vielseitige  
Räume mit einzigarti-  
gem, individuellem  
Design.*

*Домашний интерьер  
наполняется  
стремительной  
энергией мегаполисов.  
Идеальная геометрия  
определяет границы  
пространства  
– уютного,  
универсального и  
уникального*



BLACK in  
100x100 . 40"x40" RETT

WHITE home  
60x120 . 24"x48" RETT  
SQUARE Mix 60x60 . 24"x24" RETT

BLACK in  
100x100 . 40"x40" RETT



BLACK home  
60x120 . 24"x48" RETT



WHITE home  
SQUARE Mix 60x60 . 24"x24" RETT

GREY home  
60x120 . 24"x48" RETT

BLACK in  
120x120 . 48"x48" RETT

BLACK home  
SQUARE Mix 60x60 . 24"x24" RETT



BLACK in  
120x120 . 48"x48" RETT

BLACK home  
SQUARE Mix 60x60 . 24"x24" RETT

GREY home  
60x120 . 24"x48" RETT  
SQUARE Mix 60x60 . 24"x24" RETT



GREY home  
60x120 . 24"x48" RETT





WHITE home  
Mosaico Square 30x30 . 12"x12" RETT



WHITE home  
Mosaico Square 30x30 . 12"x12" RETT  
BLACK home  
60x120 . 24"x48" RETT

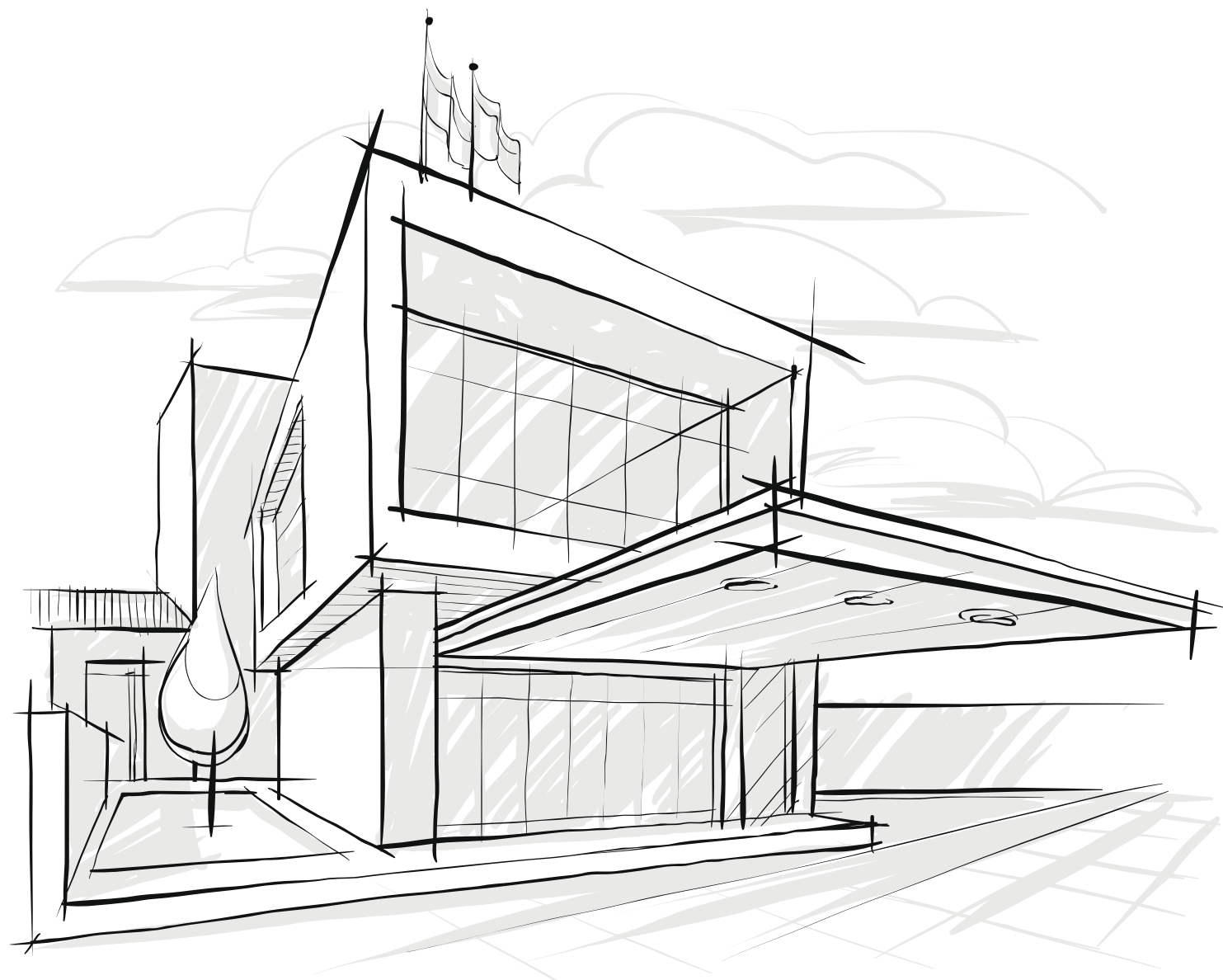
UN LUOGO DEDICATO AL PUBBLICO SI VESTE DI MATERIA ELEGANTE, CONCRETA, ESSENZIALE, CAPACE DI SUGGERIRE UNO STILE E DI DIVENTARE TRATTO DISTINTIVO NELLA SCENOGRAFIA URBANA.

*An elegant, concrete, essential material clothes public spaces, evoking a style and becoming a distinctive feature in the urban landscape*

*Un lieu consacré au public s'habille de manière élégante, concrète, essentielle. Il est capable de suggérer un style et de devenir un signe distinctif dans la scénographie urbaine.*

*Ein für die Öffentlichkeit bestimmter Ort strahlt dank seines Materials Eleganz, Gediegenheit und Essenz aus, evoziert einen Stil und wird zum Unterscheidungsmerkmal im Stadtbild.*

*Общественное пространство преобразуется благодаря элегантной материи – лаконичной, строгой, стильной, – выделяясь на фоне городских декораций*



GREY in  
120x120 . 48"x48" RETT



GREY in  
120x120 . 48"x48" RETT  
Mosaico CUBE 3D 30x30 . 12"x12" RETT



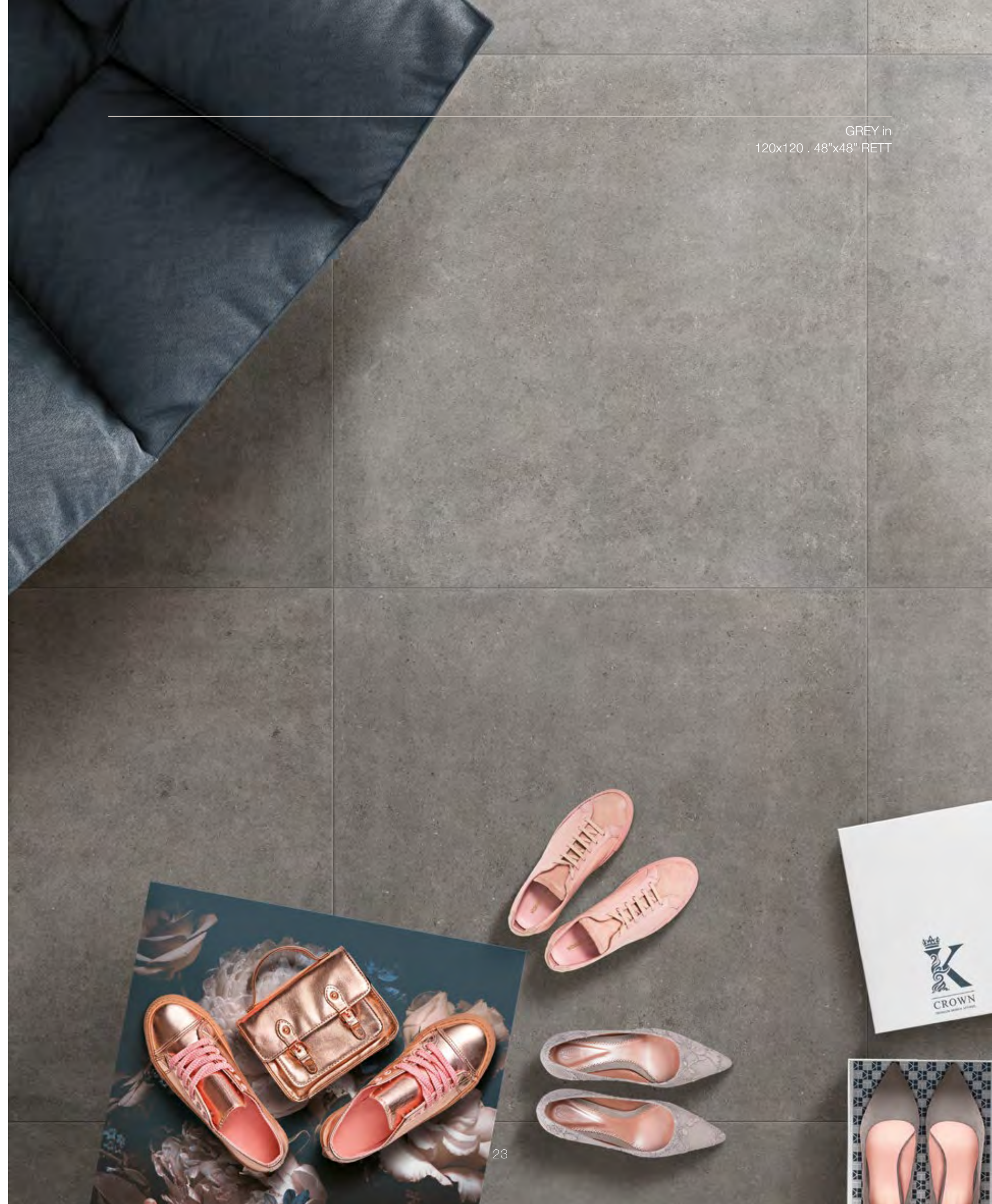
GREY in  
120x120 - 48"x48" RETT  
Mosaico CUBE 3D 30x30 - 12"x12" RETT



GREY in  
Mosaico CUBE 3D 30x30 - 12"x12" RETT



GREY in  
Mosaico CUBE 3D 30x30 . 12"x12" RETT



GREY in  
120x120 . 48"x48" RETT

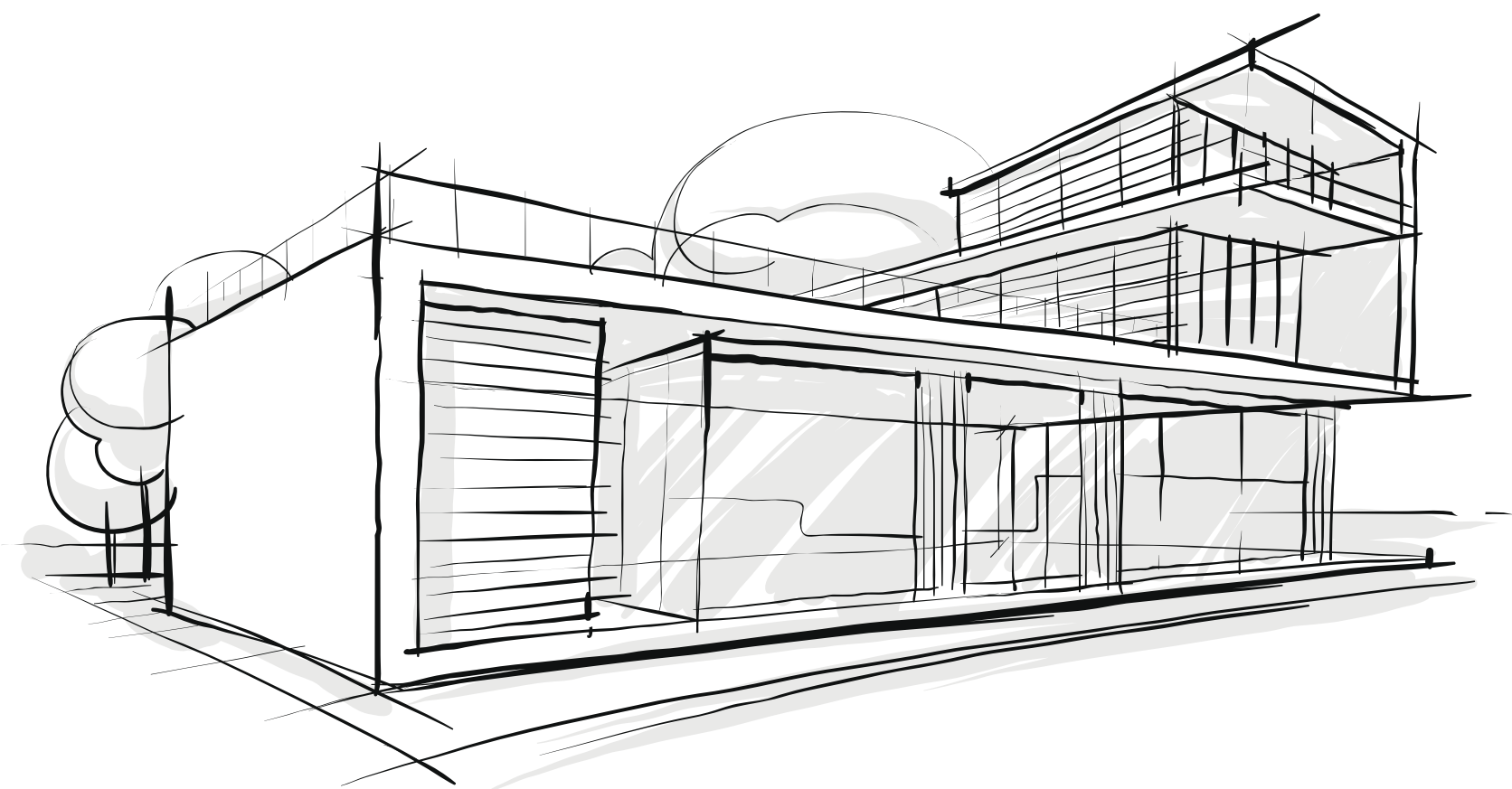
LUCE E COLORE, VOLUMI ARCHITETTONICI FUNZIONALI ED ELEGANTI DESCRIVONO IL CARATTERE DI UNO SPAZIO ABITATIVO SOSTENIBILE, APERTO ALLA NATURA CIRCOSTANTE.

*Light and colour, practical and elegant architectural volumes portray the character of a sustainable living space, open to the surrounding nature*

*La lumière et la couleur, les volumes architecturaux fonctionnels et élégants décrivent le caractère d'un espace d'habitation durable, ouvert à la nature qui l'entoure.*

*Licht und Farbe sowie funktionale und elegante Raumaufteilungen beschreiben den Charakter eines nachhaltigen Wohnraums, der sich der umliegenden Natur öffnet.*

*Свет и цвет: функциональное и элегантное объемное пространство придает домашнему интерьеру натуральную эстетику, звучащую в унисон с окружающей природой*



WHITE rock STRUTTURATO  
80x80 . 32"x32" R11 19 mm RETT  
Pezzi Speciali R11 19 mm

ROPE home  
80x80 . 32"x32" RETT



ROPE home  
80x80 . 32"x32" RETT



WHITE rock STRUTTURATO  
100x100 . 40"x40" R11 RETT



ROPE home  
80x80 . 32"x32" RETT  
Mosaico Square 30x30 . 12"x12" RETT



ROPE home  
80x80 . 32"x32" RETT  
Mosaico Square 30x30 . 12"x12" RETT

ROPE in  
80x80 . 32"x32" RETT  
Mosaico tessera 5x5 RETT



ROPE in  
30x60 . 12"x24" RETT  
Mosaico tessera 5x5 RETT

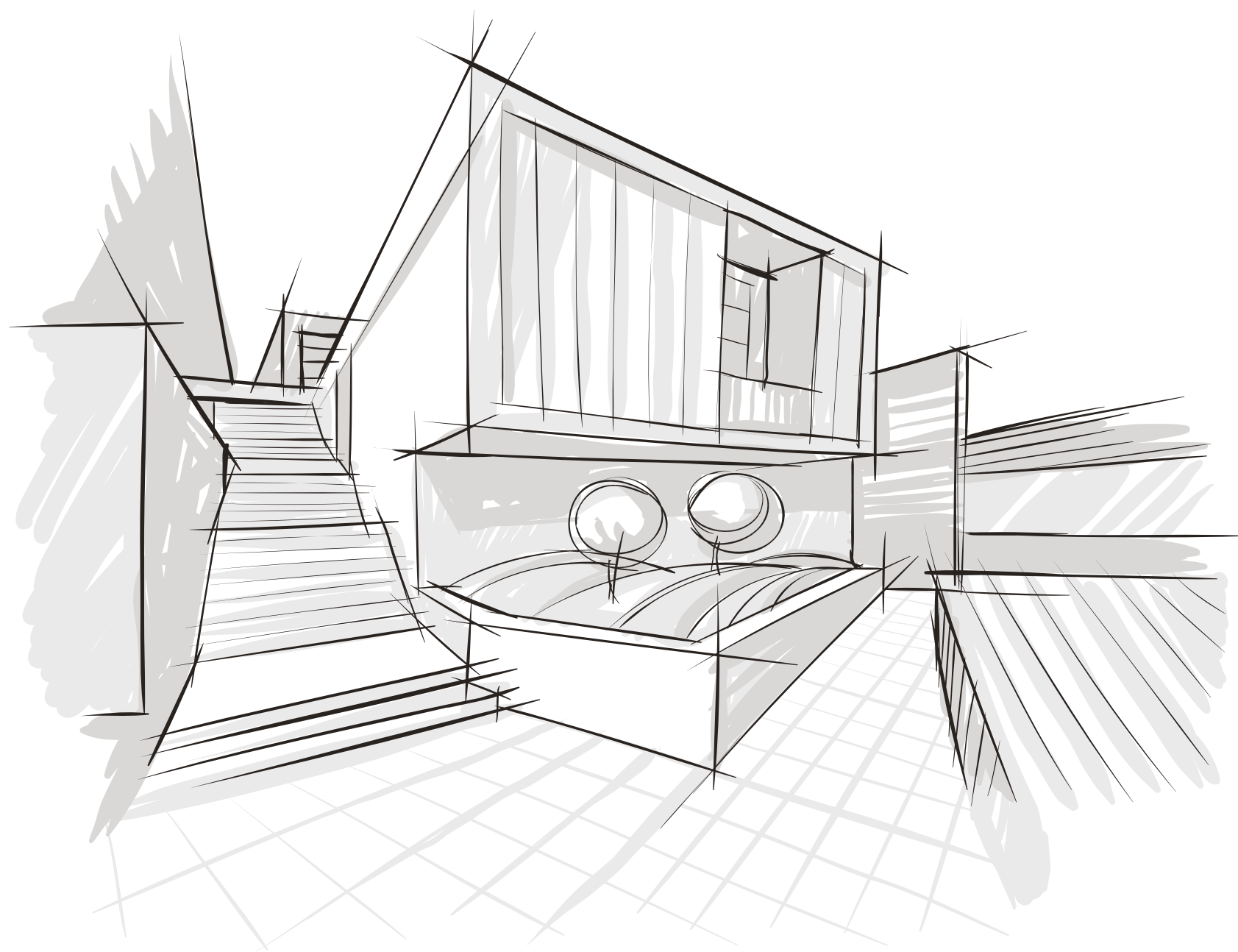
UN LOCALE CHE EMANA  
ENERGIA POSITIVA, UN  
EQUILIBRIO CROMATICO  
CHE ISPIRA SERENITÀ, PER  
CONDIVIDERE EMOZIONI E  
SENSAZIONI, LASCIANDO LA  
ROUTINE QUOTIDIANA FUORI  
DALLA PORTA .

*A space that  
gives off positive  
energy, a chromatic  
balance that  
imparts serenity, a  
sharing of emotions  
and sensations,  
leaving daily  
drudgery at the  
door*

*Une pièce qui  
émane une énergie  
positive, un équilib-  
re chromatique qui  
inspire la sérénité,  
pour partager des  
émotions et des  
sensations, en  
laissant la routine  
quotidienne hors  
d'atteinte.*

*Ein Raum, der  
positive Energie  
ausstrahlt, eine  
farbliche Harmonie,  
die Unbeschwertheit  
vermittelt, um  
Emotionen und  
Gefühle zu teilen  
und den Alltag  
auszusperrern.*

*Равновесие цвета,  
источник спокойной  
и положительной  
энергии, призывает  
прислушаться к  
своим ощущениям,  
поделиться  
своими эмоциями  
и расслабиться,  
оставив весь внешний  
мир за дверью*



ROPE in  
100x100 . 40"x40" RETT  
Mosaico CUBE 3D 30x30 . 12"x12" RETT

ROPE in  
100x100 . 40"x40" RETT  
120x120 . 48"x48" RETT  
Mosaico Cube 3D 30x30 . 12"x12" RETT

ROPE home  
30x60 . 12"x24" RETT

ROPE in  
100x100 . 40"x40" RETT



ROPE in  
100x100 . 40"x40" RETT  
Battiscopa 6,5x100 . 2<sup>9</sup>/<sub>16</sub>"x40" RETT

ROPE rock STRUTTURATO  
80x80 . 32"x32" R11 19 mm RETT



ROPE rock STRUTTURATO  
100x100 . 40"x40" R11 RETT

ROPE rock STRUTTURATO  
100x100 . 40"x40" R11 RETT

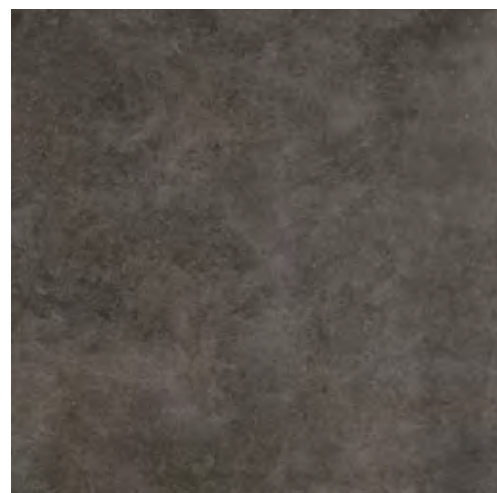


# BLACK

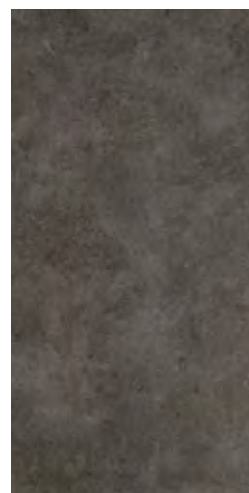
GRES PORCELLANATO A TUTTA MASSA - ISO 13006 Bia UGL  
 FULL BODY PORCELAIN STONEWARE - ISO 13006 Bia UGL



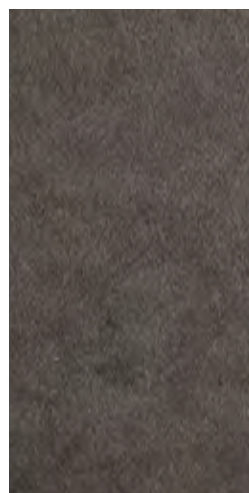
120x120 . 48"x48" 100x100 . 40"x40" 80x80 . 32"x32" 60x120 . 24"x48" 60x60 . 24"x24" 30x60 . 12"x24"



BLACK In  
 120x120 . 48"x48" R10 RETT

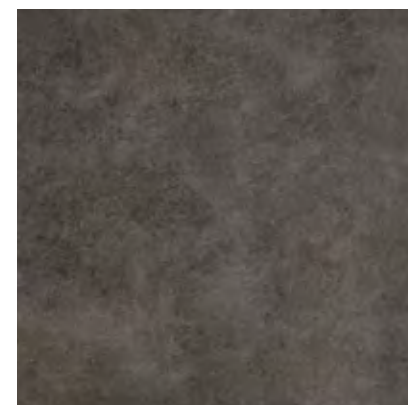


BLACK Home  
 60x120 . 24"x48" R9 RETT  
 BLACK In  
 60x120 . 24"x48" R10 RETT

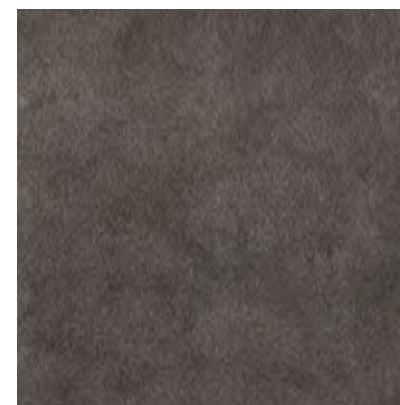


BLACK Rock  
 60x120 . 24"x48" R11  
 STRUTTURATO RETT

**10 mm** - 3/8"  
 spessore  
 thickness  
 épaisseur  
 stärke  
 толщина

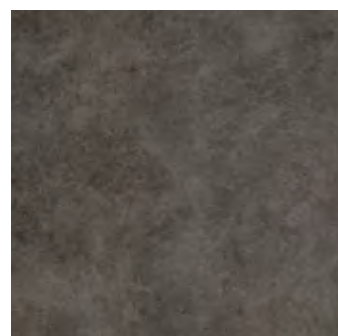


BLACK Home 100x100 . 40"x40" R9 RETT  
 BLACK In 100x100 . 40"x40" R10 RETT

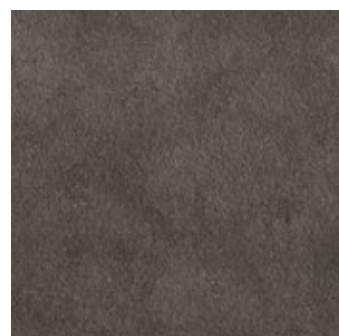


BLACK Rock  
 100x100 . 40"x40" R11 STRUTTURATO RETT

**8,5 mm** - 5/16"  
 spessore  
 thickness  
 épaisseur  
 stärke  
 толщина



BLACK Home 80x80 . 32"x32" R9 RETT  
 BLACK In 80x80 . 32"x32" R10 RETT

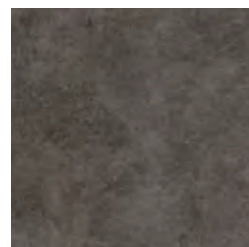


BLACK Rock  
 80x80 . 32"x32" R11 STRUTTURATO RETT



BLACK Rock  
 80x80 . 32"x32" R11 STRUTTURATO RETT

**19 mm** - 13/16"  
 spessore  
 thickness  
 épaisseur  
 stärke  
 толщина



BLACK Home 60x60 . 24"x24" R9 RETT  
 BLACK In 60x60 . 24"x24" R10 RETT



BLACK Rock  
 60x60 . 24"x24" R11 STRUTTURATO RETT



MOSAICO TESSERA  
 BLACK In 30x30 . 12"x12" RETT



MOSAICO SQUARE  
 BLACK Home 30x30 . 12"x12" RETT



MOSAICO CUBE 3D  
 BLACK In 30x30 . 12"x12" RETT



BLACK Home 30x60 . 12"x24" R9 RETT  
 BLACK In 30x60 . 12"x24" R10 RETT



BLACK Rock  
 30x60 . 12"x24" R11 STRUTTURATO RETT

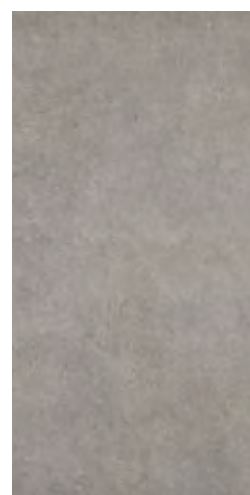




120x120 . 48"x48" 100x100 . 40"x40" 80x80 . 32"x32" 60x120 . 24"x48" 60x60 . 24"x24" 30x60 . 12"x24"



GREY In  
120x120 . 48"x48" R10 RETT



GREY Home  
60x120 . 24"x48" R9 RETT  
GREY In  
60x120 . 24"x48" R10 RETT



GREY Rock  
60x120 . 24"x48" R11  
STRUTTURATO RETT

**10 mm** - 3/8"  
spessore  
thickness  
épaisseur  
stärke  
толщина



GREY Home 100x100 . 40"x40" R9 RETT  
GREY In 100x100 . 40"x40" R10 RETT



GREY Rock  
100x100 . 40"x40" R11 STRUTTURATO RETT

**8,5 mm** - 5/16"  
spessore  
thickness  
épaisseur  
stärke  
толщина



GREY Home 80x80 . 32"x32" R9 RETT  
GREY In 80x80 . 32"x32" R10 RETT



GREY Rock  
80x80 . 32"x32" R11 STRUTTURATO RETT



GREY Rock  
80x80 . 32"x32" R11 STRUTTURATO RETT

**19 mm** - 13/16"  
spessore  
thickness  
épaisseur  
stärke  
толщина



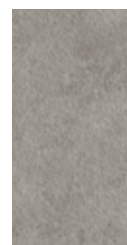
GREY Home 60x60 . 24"x24" R9 RETT  
GREY In 60x60 . 24"x24" R10 RETT



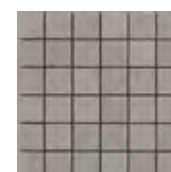
GREY Rock  
60x60 . 24"x24" R11 STRUTTURATO RETT



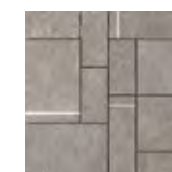
GREY Home 30x60 . 12"x24" R9 RETT  
GREY In 30x60 . 12"x24" R10 RETT



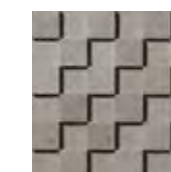
GREY Rock  
30x60 . 12"x24" R11 STRUTTURATO RETT



MOSAICO TESSERA  
GREY In 30x30 . 12"x12" RETT



MOSAICO SQUARE  
GREY Home 30x30 . 12"x12" RETT



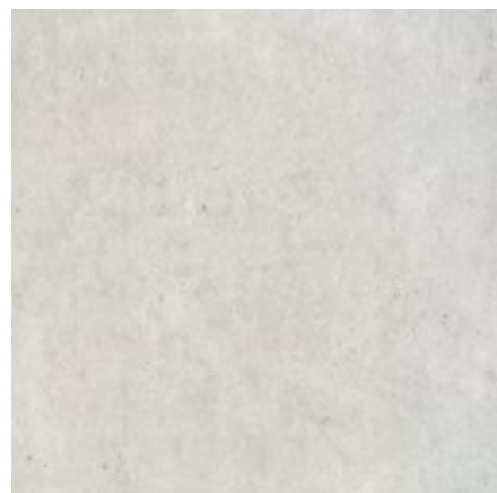
MOSAICO CUBE 3D  
GREY In 30x30 . 12"x12" RETT

# WHITE

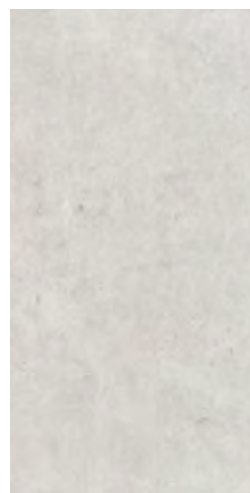
GRES PORCELLANATO A TUTTA MASSA - ISO 13006 Bia UGL  
FULL BODY PORCELAIN STONEWARE - ISO 13006 Bia UGL



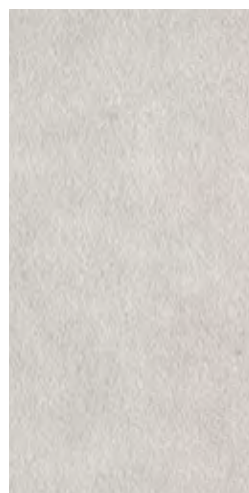
120x120 . 48"x48" 100x100 . 40"x40" 80x80 . 32"x32" 60x120 . 24"x48" 60x60 . 24"x24" 30x60 . 12"x24"



WHITE In  
120x120 . 48"x48" R10 RETT

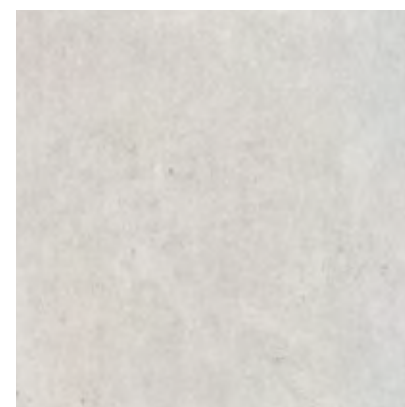


WHITE Home  
60x120 . 24"x48" R9 RETT  
WHITE In  
60x120 . 24"x48" R10 RETT

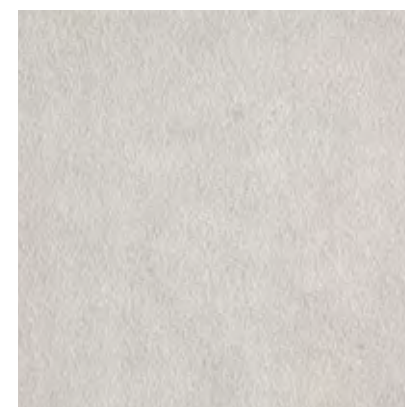


WHITE Rock  
60x120 . 24"x48" R11  
STRUTTURATO RETT

**10 mm** - 3/8"  
spessore  
thickness  
épaisseur  
stärke  
толщина

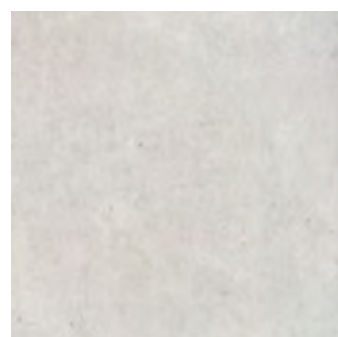


WHITE Home 100x100 . 40"x40" R9 RETT  
WHITE In 100x100 . 40"x40" R10 RETT



WHITE Rock  
100x100 . 40"x40" R11 STRUTTURATO RETT

**8,5 mm** - 5/16"  
spessore  
thickness  
épaisseur  
stärke  
толщина



WHITE Home 80x80 . 32"x32" R9 RETT  
WHITE In 80x80 . 32"x32" R10 RETT

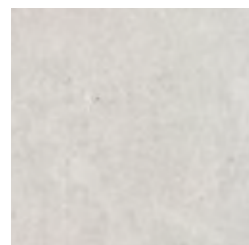


WHITE Rock  
80x80 . 32"x32" R11 STRUTTURATO RETT

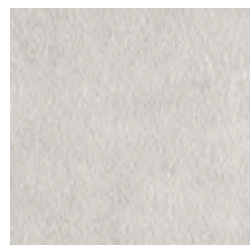


WHITE Rock  
80x80 . 32"x32" R11 STRUTTURATO RETT

**19 mm** - 13/16"  
spessore  
thickness  
épaisseur  
stärke  
толщина



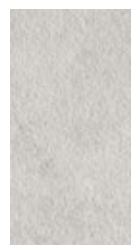
WHITE Home 60x60 . 24"x24" R9 RETT  
WHITE In 60x60 . 24"x24" R10 RETT



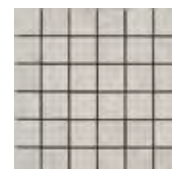
WHITE Rock  
60x60 . 24"x24" R11 STRUTTURATO RETT



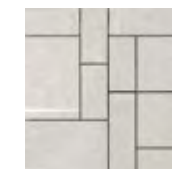
WHITE Home 30x60 . 12"x24" R9 RETT  
WHITE In 30x60 . 12"x24" R10 RETT



WHITE Rock  
30x60 . 12"x24" R11 STRUTTURATO RETT



MOSAICO TESSERA  
WHITE In 30x30 . 12"x12" RETT



MOSAICO SQUARE  
WHITE Home 30x30 . 12"x12" RETT



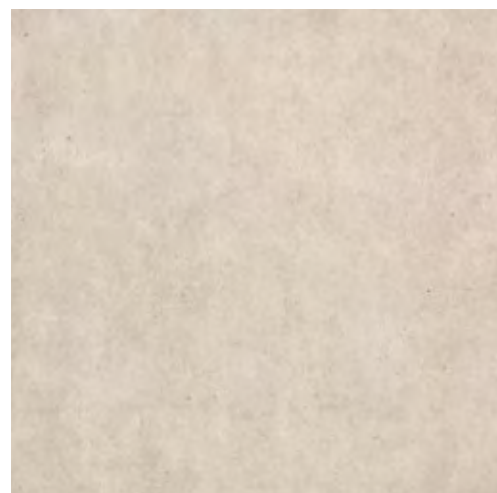
MOSAICO CUBE 3D  
WHITE In 30x30 . 12"x12" RETT

# ROPE

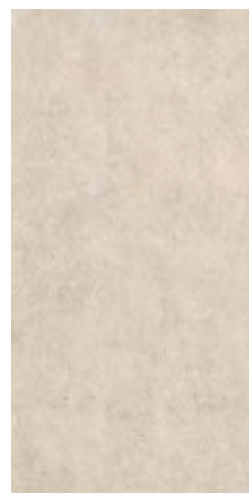
GRES PORCELLANATO A TUTTA MASSA - ISO 13006 Bia UGL  
FULL BODY PORCELAIN STONEWARE - ISO 13006 Bia UGL



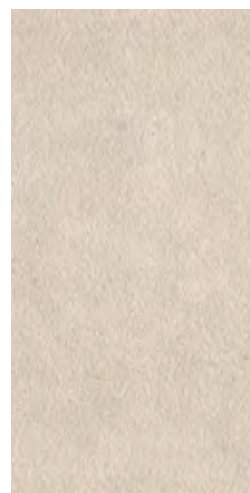
120x120 . 48"x48" 100x100 . 40"x40" 80x80 . 32"x32" 60x120 . 24"x48" 60x60 . 24"x24" 30x60 . 12"x24"



ROPE In  
120x120 . 48"x48" R10 RETT

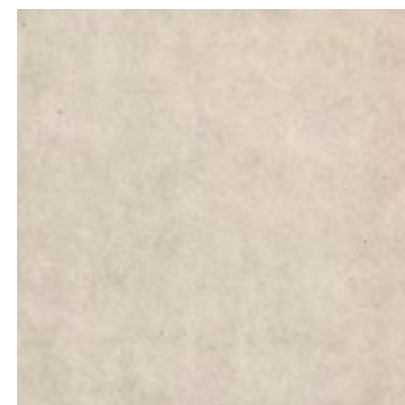


ROPE Home  
60x120 . 24"x48" R9 RETT  
ROPE In  
60x120 . 24"x48" R10 RETT



ROPE Rock  
60x120 . 24"x48" R11  
STRUTTURATO RETT

**10 mm** - 3/8"  
spessore  
thickness  
épaisseur  
stärke  
толщина

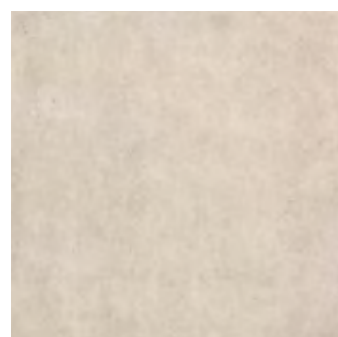


ROPE Home 100x100 . 40"x40" R9 RETT  
ROPE In 100x100 . 40"x40" R10 RETT



ROPE Rock  
100x100 . 40"x40" R11 STRUTTURATO RETT

**8,5 mm** - 5/16"  
spessore  
thickness  
épaisseur  
stärke  
толщина



ROPE Home 80x80 . 32"x32" R9 RETT  
ROPE In 80x80 . 32"x32" R10 RETT

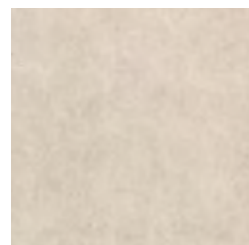


ROPE Rock  
80x80 . 32"x32" R11 STRUTTURATO RETT

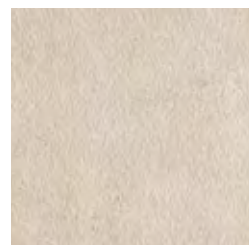


ROPE Rock  
80x80 . 32"x32" R11 STRUTTURATO RETT

**19 mm** - 13/16"  
spessore  
thickness  
épaisseur  
stärke  
толщина



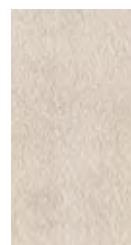
ROPE Home 60x60 . 24"x24" R9 RETT  
ROPE In 60x60 . 24"x24" R10 RETT



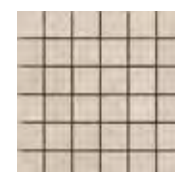
ROPE Rock  
60x60 . 24"x24" R11 STRUTTURATO RETT



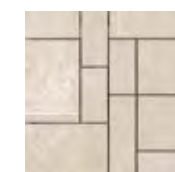
ROPE Home 30x60 . 12"x24" R9 RETT  
ROPE In 30x60 . 12"x24" R10 RETT



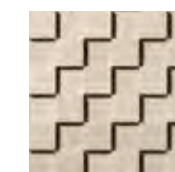
ROPE Rock  
30x60 . 12"x24" R11 STRUTTURATO RETT



MOSAICO TESSERA  
ROPE In 30x30 . 12"x12" RETT



MOSAICO SQUARE  
ROPE Home 30x30 . 12"x12" RETT



MOSAICO CUBE 3D  
ROPE In 30x30 . 12"x12" RETT

# S Q U A R E



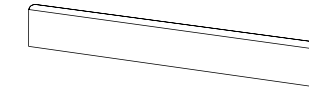
## SQUARE Mix



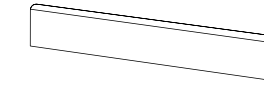
SQUARE MIX HOME  
60x60 . 24"x24" RETT

↓ ↑  
**10 mm** - 3/8"  
spessore  
thickness  
épaisseur  
stärke  
толщина

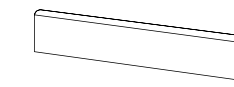
## Pezzi Speciali . Trims. Pièces Spéciales. Formstücke. Специальные изделия



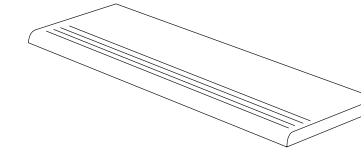
BATTISCOPA in  
6,5x100 . 2<sup>9</sup>/<sub>16</sub>"x40" RETT



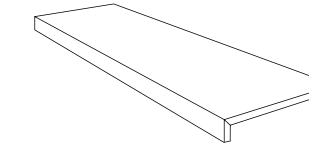
BATTISCOPA in  
7,5x80 . 3"x32" RETT



BATTISCOPA in  
6,5x60 . 2<sup>9</sup>/<sub>16</sub>"x24" RETT



STEP MOLATO home  
30x60 . 12"x24" RETT  
STEP MOLATO in  
30x60 . 12"x24" RETT



GRADONE COSTA RETTA home  
30x60x3,3 . 12"x24"x1<sup>5</sup>/<sub>16</sub>" RETT  
GRADONE COSTA RETTA in  
30x60x3,3 . 12"x24"x1<sup>5</sup>/<sub>16</sub>" RETT

↓ ↑  
**10 mm** - 3/8"  
spessore  
thickness  
épaisseur  
stärke  
толщина



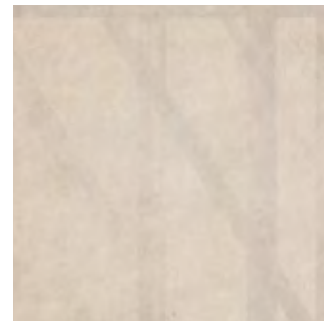
SQUARE Mix  
BLACK Home  
60x60 . 24"x24" RETT



SQUARE Mix  
WHITE Home  
60x60 . 24"x24" RETT



SQUARE Mix  
GREY Home  
60x60 . 24"x24" RETT



SQUARE Mix  
ROPE Home  
60x60 . 24"x24" RETT

COPPIA ANGOLO GRIGLIA 2 PZ ROCK R11  
20x80 . 8"x32" RETT

↓ ↑  
**19 mm** - 13/16"  
spessore  
thickness  
épaisseur  
stärke  
толщина

STEP MOLATO ROCK R11  
40x80 . 16"x32" RETT

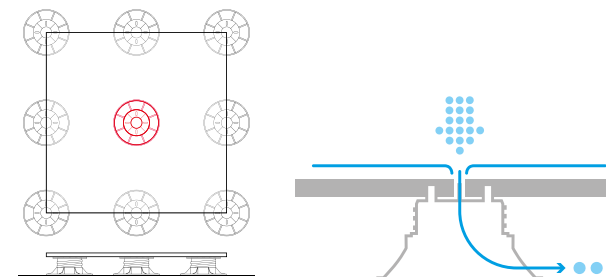
80x80 16"x16" 19 mm R11

GRIGLIA PER PISCINA ROCK R11  
20x80 . 8"x32" RETT

STEP TORATO ROCK R11  
40x80 . 16"x32" RETT

COSTA RETTA ROCK R11  
35x80x12 . 13<sup>3</sup>/<sub>4</sub>"x32"x4<sup>3</sup>/<sub>4</sub>" RETT

ELEMENTO AD "L" ASSEMBLATO ROCK R11  
15x80x5 . 6"x32"x2" RETT



Per una migliore stabilità della pavimentazione a secco sopraelevata, si suggerisce l'impiego di 9 supporti per lastra 80x80.  
For more stability of the dry laid raised floor, the use of 9 supports per 80x80 - 32"x32" pavers is advisable. Pour une meilleure stabilité du revêtement de sol surélevé posé à sec, il est recommandé d'utiliser 9 supports par dalle 80x80. Zur Erhöhung der Stabilität von Doppelböden wird empfohlen, pro Platte im Format 80x80 9 Halter einzusetzen. Для наилучшей устойчивости фальшполов рекомендуется использование опор в количестве 9 шт для формата 80x80 под каждую плиту.

**GRES PORCELLANATO A TUTTA MASSA - ISO 13006 Bla UGL**  
**FULL BODY PORCELAIN STONEWARE - GRÈS CÉRAME PLAINE MASSE**  
**VOLLMASSEFEINSTEINZEUG - КЕРАМОГРАНИТ ПО ВСЕЙ ТОЛЩИНЕ**

	<b>Lunghezza e larghezza</b> Length and width Longueur et largeur Länge und Breite Длина и ширина	Deviaz. val. medio % rispetto a dimens. di fabbricazione. Ecart dimensionnel moyen en % par rapport aux dimensions de fabrication. Deviation of the average size for each tile from the work size (%). Abweichung des Durchschnittswertes in % hinsichtlich der Produktionsgröße. Отклонение средн. значения, %, от производственных размеров > 410 cm <sup>2</sup> +/- 0,6% - ≤ 410 cm <sup>2</sup> +/- 0,75%	± 0,5% ± 2 mm	
		Deviaz. val. medio % rispetto a dimens. di fabbricazione. Deviation of the average size for each tile from the average size to the 10 test specimens (%). Ecart de valeur moyenne unitaire % en rapport à la valeur moyenne de 10 échantillons mesurés. Abweichung des Durchschnittswertes der einzelnen Fliesen in % hinsichtlich des Durchschnitts von 10 getesteten Mustern. Отклонение средн. значения, отдельной плитки относительно средн. значения 10 измеренных образцов +/- 0,75%	± 0,5% ± 2 mm	
UNI EN ISO 10545-2	<b>Rettilineità degli spigoli</b> Straightness of sides Rectitude des arêtes Kantengeradheit Прямолинейность кромок	+/- 0,5%	± 0,3% MAX ± 1,5 mm	
	<b>Spessore / Thickness / Épaisseur / Stärke / Толщина</b>	+/- 5%	± 5% MAX ± 0,5 mm	
	<b>Ortogonalità</b> Rectangularity Orthogonalité Rechtwinkligkeit Ортогональность	+/- 0,5%	± 0,3% ± 1,5 mm	
	<b>Variazioni di tono.</b> Shade variations Variations de nuance Tonvariationen Вариации оттенка	-		
UNI EN ISO 10545-3	<b>Assorbimento d'acqua</b> Water absorption Absorption d'eau Wasseraufnahme Водопоглощение	≤ 0,5% GRUPPO Bla UGL ≤ 0,5% GRUPPO Bla GL	E ≤ 0,1%	
	<b>Resistenza della superficie (scala MOHS)</b> Scratch hardness (MOHS scale) Dureté de la surface (échelle MOHS) Oberflächenhärte (MOHS skala) Поверхностная прочность по шкале Мооса	EN 101	> 6	
UNI EN ISO 10545-4	<b>Resistenza a flessione e forza di rottura</b> Modulus of rupture and breaking strength résistance à la flexion et force de rupture Biegefestigkeit und Bruchlast Прочность на изгиб / Модуль жесткости	S ≥ 1300 N  R ≥ 35 N/mm <sup>2</sup>	S ≥ 1300 N  R ≥ 35 N/mm <sup>2</sup>	
	<b>Resistenza all'abrasione profonda</b> Abrasion resistance Résistance à l'abrasion Verschleiß (Volumenverlust) Сопротивление глубокому истиранию	≤ 175 mm <sup>3</sup>	≤ 175 mm <sup>3</sup>	
UNI EN ISO 10545-8	<b>Coefficiente di dilatazione termica lineare</b> Linear thermal expansion coefficient Dilatation thermique linéaire Lineare Wärmeausdehnung Кэффициент линейного теплового расширения	<b>Come dichiarato dal produttore</b> See manufacturer's declaration Selon déclaration du producteur Entsprechend der Herstellerangaben Как указано изготовителем	<b>Metodo disponibile</b> Method available Méthode disponible Verfügbares Verfahren Определяется производителем	
UNI EN ISO 10545-9	<b>Resistenza allo shock termico</b> Thermal shock resistance Résistance au choc thermique Temperaturwechselbeständigkeit Стойкость к тепловым перепадам	<b>Nessun campione deve presentare alterazioni</b> No sample must show visible alteration Aucun carreau ne doit présenter d'altération Kein Muster darf sichtbare Veränderungen zeigen Никакой образец не должен показывать изменений	<b>Resistente</b> Resistant Résistant Widerstandsfähig Устойчивый	
UNI EN ISO 10545-12	<b>Resistenza al gelo</b> Frost resistance Résistance au gel Frostbeständigkeit Морозостойкость	<b>Non devono presentare difetti visibili</b> No sample must show visible defect Aucun carreau ne doit présenter de défaut Muster dürfen keine sichtbaren Schäden zeigen Не должны обнаруживать видимые дефекты	<b>Ingelivo</b> Frost proof Ingelif Froststichfest Морозостойкость	
UNI EN ISO 10545-13	<b>Resistenza all'attacco chimico (trame acido fluoridrico)</b> Resistance to chemical attack (except hydrofluoric acid) Résistance à l'attaque chimique (sauf acide fluorhydrique) Säure- und Laugenbeständigkeit (außer Flußsäure) Стойкость к кислотным химикатам	<b>Nessun campione deve presentare alterazioni</b> No sample must show visible alteration Aucun carreau ne doit présenter d'altération Muster dürfen keine sichtbaren Veränderungen zeigen Никакой образец не должен показывать изменений	<b>Classe A-HA-LA</b> Class A-HA-LA Classe A-HA-LA Gruppe A-HA-LA Класс A-HA-LA	
UNI EN ISO 10545-14	<b>Resistenza alle macchie di piastrelle smaltate</b> Resistance to stains of glazed tiles Résistance aux taches des carreaux émaillés Widerstand gegen Fleckenbildner der glasierten Fliesen Стойкость глазурированной плитки к образованию пятен	<b>Nessun campione deve presentare alterazioni</b> No sample must show visible alteration Aucun carreau ne doit présenter d'altération Muster dürfen keine sichtbaren Veränderungen zeigen Никакой образец не должен показывать изменений	<b>Classe 5</b> Class 5 Classe 5 Gruppe 5 Класс 5	
	<b>Resistenza alla scivolosità.</b> <b>Coefficiente di attrito medio</b> Slid resistance. Average coefficient of friction Résistance au glissement. Coefficient de frottement moyen Rutschfestigkeit. Mittlerer Reibungswert Сопротивление скольжению. Средний коэффициент трения	DIN 51130 (no lapp)	0,40 ≤ <b>M</b> ≤ 0,74	
		B.C.R.A. REP. CEC. 6/81 (no lapp)	<b>IN R10</b>	<b>ROCK R11</b>
		DIN 51097 (no lapp)	<b>R10</b> Classe B Class B Classe B Gruppe B Класс B	<b>R11</b> Classe C Class C Classe C Gruppe C Класс C
		DCOF Acu Test (no lapp)	<b>M</b> ≥ 0,42	
		Pendulum Australiano AS 4586	<b>IN R10:</b> Classe P3 Class P3 Classe P3 Gruppe P3 Класс P3	<b>ROCK R11:</b> Classe P4 Class P4 Classe P4 Gruppe P4 Класс P4
Pendulum Britannico BS 7976		PTV > 36 dry		

**imballaggi**

Packing  
Emballage  
Verpackung  
Упаковка

	PCS/BOX	SQM/BOX	KGS/BOX	BOXES/PALLET	SQM/PALLET	KGS/PALLET
120x120 . 48"x48"	1	1,44	31,68	40	57,60	1.290
100x100 . 40"x40" RETT R9 100x100 . 40"x40" RETT R10 100x100 . 40"x40" RETT R11 STRUTTURATO	1	1,00	20,65	42	42,00	900
80x80 . 32"x32" RETT R9 80x80 . 32"x32" RETT R10 80x80 . 32"x32" RETT R11 STRUTTURATO	2	1,28	28,50	40	51,20	1.160
80x80 . 32"x32" <b>19 mm</b>	1	0,64	29,00	40	25,60	1.176
60x120 . 24"x48" RETT R9 60x120 . 24"x48" RETT R10 60x120 . 24"x48" RETT R11 STRUTTURATO	2	1,44	31,70	21	30,24	680
60x60 . 24"x24" RETT R9 60x60 . 24"x24" RETT R10 60x60 . 24"x24" RETT R11 STRUTTURATO	3	1,08	23,50	32	34,56	770
30x60 . 12"x24" RETT R9 30x60 . 12"x24" RETT R10 30x60 . 12"x24" RETT R11 STRUTTURATO	6	1,08	23,30	40	43,20	950



Posa consigliata con una sfalsatura tra ciascun listello non superiore al 25% della lunghezza. When laying, you are recommended not to stagger the strips by more than 25% of the length. Pose conseillée avec un décalage entre chaque listel non supérieur au 25% de la longueur. Wir empfehlen eine Verlegung im Viertelverband. Рекомендуется укладка с разном элементов друг относительно друга, не превышающим 25% длины элемента



Per i grandi formati è consigliata la posa con l'utilizzo di distanziatori livellanti, tipo Levelling System di Raimondi. We suggest to lay large sizes with "levelling spacers" like the Raimondi's Levelling System. Pour les grands formats, nous conseillons croisillons nivelants, type Levelling System de l'usine Raimondi. Wir empfehlen fuer die Verlegung der grossen Formaten die Benutzung von Autolevellierungssysteme, wie z.B. Raimondi Levelling System. Для выкладки больших форматов советуем использовать распорную выравнивающую деталь типа Levelling System di Raimondi.

<b>NOTE TECNICHE - TECHNICAL NOTES - NOTES TECHNIQUES - TECHNISCHE ANMRKUNGEN - ТЕХНИЧЕСКИЕ ЗАМЕЧАНИЯ</b>
Tutti i formati sono nominali. Cercom Ceramiche si riserva la facoltà di modificare in qualunque momento le informazioni e le caratteristiche illustrate nel presente catalogo, che non sono comunque da ritenere legalmente vincolanti. I colori e le caratteristiche estetiche dei prodotti sono quanto più possibile vicini a quelli reali, nei limiti consentiti dai processi di stampa.
All sizes are nominal. Cercom Ceramiche reserves the right to modify the information and the characteristics illustrated in this catalogue (which are in any case not legally binding) at any moment. The colours and appearance features of the products are as close as possible to reality, within the limitation of the printing process.
Tous les formats sont nominaux. Cercom Ceramiche se réserve la faculté de modifier à tout moments les informations et les caractéristiques figurant dans le présent catalogue, lesquelles n'engagent pas par le fabricant au plan légal. Les couleurs et les caractéristiques esthétiques sont fidèles aux couleurs et caractéristiques réelles dans les limites des procédés d'impression.
Alle Formate sind Nennwerte. Die Firma Cercom Ceramiche behält sich vor, die in diesem Katalog enthaltenen Informationen und Eigenschaften jederzeit zu ändern; sie gelten auf keinen Fall als gesetzlich bindend. Die Farben und ästhetischen Eigenschaften der Produkte kommen innerhalb der Möglichkeiten der Druckverfahren den tatsächlichen Eigenschaften so weit wie möglich nahe.
Все форматы являются номинальными. Cercom Ceramiche оставляет за собой изменять в любой момент данные и характеристики, приведенные в настоящем каталоге, которые в любом случае не считаются юридически обязательными. Цветовая окраска и эстетические характеристики изделий приближаются как можно больше к реальным, в пределах, допускаемых процессами печати.

<b>CONSIGLI PER LA POSA - LAYING SUGGESTIONS - CONSEILS POUR LA POSE - VERLEGEHINWEISE - РЕКОМЕНДАЦИИ ПО УКЛАДКЕ</b>
Stendere a terra alcuni metri (almeno 3 mq) per controllare l'effetto d'insieme. Posare il materiale attingendo da più scatole controllandone accuratamente calibro, tonalità e scelta. • Nella posa è consigliabile lasciare una fuga di 2 mm fra le piastrelle utilizzando stucco in tono. • La posa modulare è consigliata con una fuga di almeno 2 mm. • È comunque compito del progettista stabilire, in funzione della struttura e della destinazione d'uso del piano di calpestio, il corretto modo di applicazione delle piastrelle.
Lay some pieces of product (at least 3 sqm) to check the overall effect. Lay the material taking it from several boxes and carefully check its size accuracy, shade and material sorting. • In the lay-out is advisable to leave at least 2 mm joint between each tile and fill with grout of the same colour as the tile. • We recommend modular laying with a 2 mm - <sup>1</sup> / <sub>32</sub> joint. • However, the designers has to establish the correct way of application of the tiles depending on the structure and the foreseen utilization of the floor.
Appuyer sur le sol quelques pieds (au moins 2 mc) pour apprécier l'effet global. Poser le matériel en le prenant de plusieurs boîtes et en contrôlant l'épaisseur, les nuances et la qualité des différentes pièces. • Lors de la pose, on recommande de laisser un joint de 2 mm entre les carreaux en utilisant un mastic du même ton. • La pose modulaire est calculée avec un joint de 2 mm. • D'ailleurs c'est le concepteur qui doit établir, sur la base de la structure et de la destination d'emploi du plan de piétinement, le procédé d'application correct des carreaux.
Eine Quadratmeter (min. 2 qm) auf dem Boden legen, um die Gesamtwirkung nachzuprüfen. Wir empfehlen Fliesen aus mehreren Kartons zu verlegen, nach einer sorgfältigen Prüfung des Kalibers, des Farbtons und der Sortierung. • Deswegen werden eine min. 2 mm Fuge zwischen den Fliesen und ein weiss oder grauer Kitt empfohlen. • Die Modulverlegung wird mit einer Mindestfuge von 2 mm empfohlen. Es ist auf jeden Fall Aufgabe des Planers, nach der Struktur und dem Verwendungszweck der Trittfläche, die richtige Verlegeart der Fliesen zu bestimmen.
Разложите изделия на полу для проверки общего эффекта. Укладывать материал, тщательно проверяя калибр, тональность и сорт. • При укладке рекомендуется оставлять между плитками зазор в 2 мм, используя подходящую по тону замазку. • Модульную укладку рекомендуется выполнять со швом не менее 2 мм. • В любом случае является задачей проектировщика, в зависимости от структуры и назначения, определять соответствующий способ укладки плитки.



IN COLLABORAZIONE CON:



Luci Italiana dal 1960

<b>CE</b>
<b>GRUPPO ROMANI S.p.A. INDUSTRIE CERAMICHE</b> VIA A. VOLTA 9, 23/25 42013 CASALGRANDE (RE)
05 001CPR2013-07-01
<b>EN 14411:2012</b> Piastrelle di ceramica pressate a secco, con assorbimento di acqua $E_s \leq 0,5\%$ , per pavimentazioni interne ed esterne. Dry pressed ceramic tile, with water absorption $E_s \leq 0,5\%$ , for internal and external floorings.

© Copyright 2019 Gruppo Romani S.p.A.

**Gruppo Romani S.p.A. Industrie Ceramiche**  
[www.grupporomanispa.com](http://www.grupporomanispa.com)





DAL1975

**CERCOM CERAMICHE**

[www.cercomceramiche.it](http://www.cercomceramiche.it)

Via A. Volta 23/25 - 42013 Casalgrande (RE) Italy  
Tel. +39-0522-998411/911  
Fax Italy +39-0522-998910  
Fax Export +39-0522-996218

